



**Tile and Stone Fixing
Adhesive Solutions**

Setae CTA

Premixed cement based ready to use tile adhesive for fixing ceramic tiles.

Setae CTA is premixed cement based thin-set tile adhesive to fix small & medium format highly porous tiles like ceramic tiles, clay tiles and terracotta.

It is suitable to use with porous substrates like concrete, Cement screed, cement PCC etc.#

Key features:

- Premixed easy to prepare
- Good bond strength to various cement based substrates
- Self curing product
- For highly porous substrates
- Better workability than cement mortar
- Suitable for thin and medium bed application
- Low VOC
- For internal use

Coverage : 55-60 sq.ft. per 20Kg bag with using 6mm x 6mm notch trowel on smooth surfaces.

Complies To:

IS:15477 Type 1T Adhesive

Packaging : 20Kg Bag

Shelf Life: 12 months from the date of manufacturing when stored in dry place with original packaging



#For technical parameters and detailed application guidelines please refer company's official product datasheet.

Setae Tile

Polymer modified thin-set adhesive for tile on tile applications

Setae Tile is a polymer modified multipurpose cement based thin-set tile adhesive specifically developed to fix small & medium format ceramic tiles on wall and floor, and to fix small format vitrified tiles on floor for interior and exterior application.

It is suitable to use with porous substrates like concrete, plastered cement wall, Cement screed, brick wall etc.#

It can be mixed with latex admix to enhance adhesion and flexibility.

Suitable Substrates:

Cement based plastered wall and screed, R.C.C. Concrete surface, Brick, Unpolished natural stone and ceramic tiles.#

Key features:

- Premixed easy to prepare
- High bond strength
- Better workability than cement mortar
- Suitable for thinset and medium bed application
- Suitable for Tile-On-Tile Applications
- For internal and external use

Coverage : 55-60 sq.ft. per 20Kg bag with using 6mm x 6mm notch trowel on smooth surfaces.

Complies To:

ANSI A 118.1 T, EN 12004:C1T, ISO 13007 C1T, IS:15477 Type 1T Adhesive

Packaging : 20Kg Bag

Shelf Life: 12 months from the date of manufacturing when stored in dry place with original packaging

#For technical parameters and detailed application guidelines please refer company's official product datasheet.



Setae Fix

Polymer modified thin-set adhesive for fixing tiles and natural stone on floor and wall

Setae fix is a high performance polymer modified multipurpose cement based thin-set tile adhesive specifically developed to fix all format ceramic tiles, small & medium format vitrified tiles, natural stone and marble for interior and exterior application.

Recommended to use for less water absorbent materials such as vitrified tiles and stones.

It can be mixed with latex admix to use fix large format tiles in internal and external areas.

Suitable Substrates:

Cement based plastered wall and screed, Concrete, Brick/AAC Block* masonry, Existing tiles and stone flooring. #

Key features:

- Premixed and ready to use
- Superior bond strength
- Highly workable
- Suitable for thin and medium bed application
- Suitable for Tile-On-Tile Applications
- For internal and external use
- Economic option for laying stone and marble floor

Coverage : 55-60 sq.ft. per 20Kg bag with using 6mm x 6mm notch trowel on smooth surfaces.

Complies To:

ANSI A 118.1 T, EN 12004 C2T, ISO 13007:C2T, IS:15477 Type 2T Adhesive

Packaging : 20Kg Bag

Shelf Life: 12 months from the date of manufacturing when stored in dry place with original packaging

#For technical parameters and detailed application guidelines please refer company's official product datasheet.



Setae Flex

Polymer modified thin-set flex adhesive for fixing tiles, natural stone and glass-mosaic tiles on floor and wall

Setae Flex is a multipurpose polymer-modified high performance thin-set glass tile adhesive. It is suitable for wide range of applications like fixing small and large format vitrified tiles, Natural stone and marble, Glass Tiles, Tile-On-Tile applications for internal and external use.#

Recommended to use for commercial spaces with 24h foot traffic.

Suitable Substrates:#

Cement based plaster and screed, brick & AAC block masonry, Tile-on-Tile application(on tile, mosaic, natural stone and Glass Tiles), Cement and Gypsum based boards**.

Key features:

- High performance flex Adhesive
- For fixing all type of tiles and natural stone
- Low shrinkage and crack resistant
- Shock resistant
- Suitable for Submerged conditions
- Recommended for Glass Tiles application
- Extended Working time

Coverage : 55-60 sq.ft. per 20Kg bag with using 6mm x 6mm notch trowel on smooth surfaces.

Complies To:

ANSI A 118.4 TE, EN 12004 C2TE, ISO 13007:C2TE, IS:15477 Type 3T Adhesive

Packaging : 20Kg Bag

Shelf Life: 12 months from the date of manufacturing when stored in dry place with original packaging

#For technical parameters and detailed application guidelines please refer company's official product datasheet.

**Consult backer board manufacturer's datasheet for recommendations.



Setae FixAll

Polymer modified highly flexible thin-set adhesive for applications requiring high performance

Setae FixAll is a multipurpose polymer-modified high performance thin-set adhesive. It is suitable for wide range of applications like fixing small and large format vitrified tiles, Natural stone and marble, Glass Tiles, Tile-On-Tile applications, Moisture Sensitive stones, Natural deformable stone for internal and external use.

Suitable Substrates:

Cement based plaster and screed, brick & AAC block* masonry, Tile-on-Tile application(on tile, mosaic, natural stone and Glass Tiles), Cement and Gypsum based boards**, for under floor heating systems, for under floor moisture barrier(suitable with cementitious thinset) #

Key features:

- High performance and Highly flexible tile adhesive
- For fixing all type of tiles and natural stone
- Suitable for Submerged conditions
- Recommended for demanding applications
- Suitable to use on newly laid concrete slab or mortar bed when fortified with latex admix
- Extended Working time
- Suitable for all weather conditions

Coverage : 55-60 sq.ft. per 20Kg bag with using 6mm x 6mm notch trowel on smooth surfaces.

Complies To: ANSI A 118.4TE, EN 12004 C2TES1, ISO 13007:C2TES1, IS:15477 Type 3 TS1 Adhesive

Packaging : 20Kg Bag

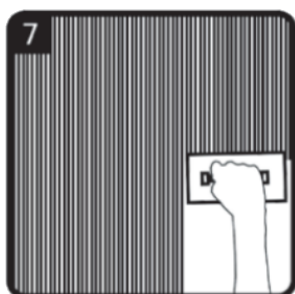
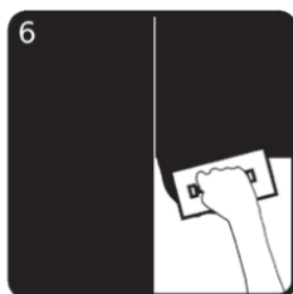
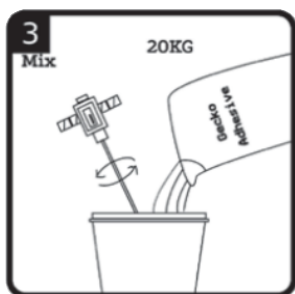
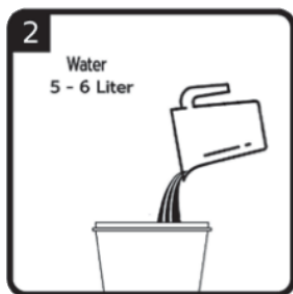
Shelf Life: 12 months from the date of manufacturing

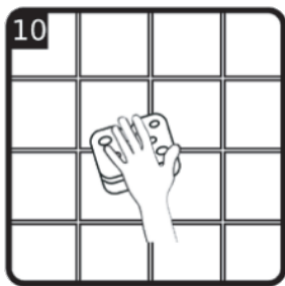
#For technical parameters and detailed application guidelines please refer company's official product datasheet.

**Consult backer board manufacturer's datasheet for recommendations.



Application





#For detailed application guidelines please refer company's official product datasheet.

Notes:

- Before laying tiles, surface should be cleaned thoroughly such that no dust, loose particles, grease or oil residue are present. if needed use mechanical brush.
- When fixing tiles make sure surface is properly leveled and do not vary more than 1/6"/10ft. In case of variation, repair it using mortar or patching compound.
- Do not fix tile/stone on newly laid slab or mortar bed before it's full curing cycle(unless allowed by datasheet) completes.
- Appropriate movement joints must be kept and filled with flexible grout or sealant. Do not cover expansion joint or structural movement joints with tile/stone.
- Adhesive should be applied with plain trowel for optimal distribution and then notched trowel should be used to comb the adhesive for required coverage (at least 90%). Periodically pull fixed tiles and check optimal adhesive transfer (>90%) from surface to tile.
- When using flex adhesives to fix the tiles on cement boards make sure to anchor the board at the center to center distance of 300mm and surface should be primed if necessary.
- When fixing heavy stones or tiles on vertical surfaces its required to use mechanical clamps.
- Use reactive resin based adhesive to fix artificial stones (engineered stones / Agglomerates / Quartz stones), resin/mesh backed glass tiles, metal and other similar surfaces.

V. 0.1 alpha



Contact:

E-mail: contact@geckoadhesives.com

Visit: <http://geckoadhesives.com>

